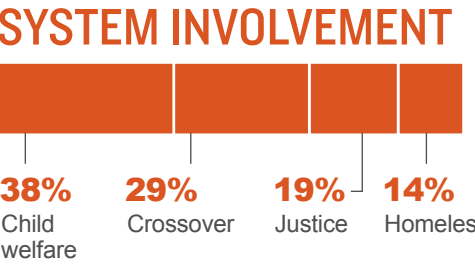
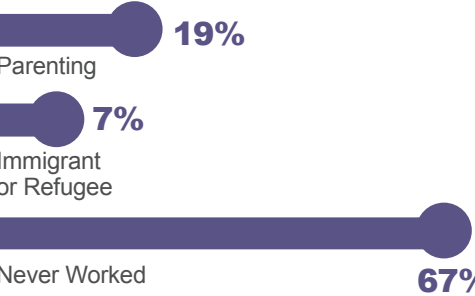
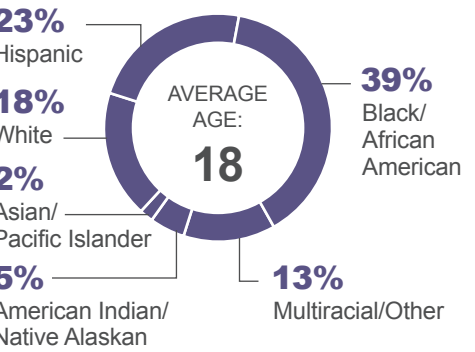


# LEARN AND EARN TO ACHIEVE POTENTIAL

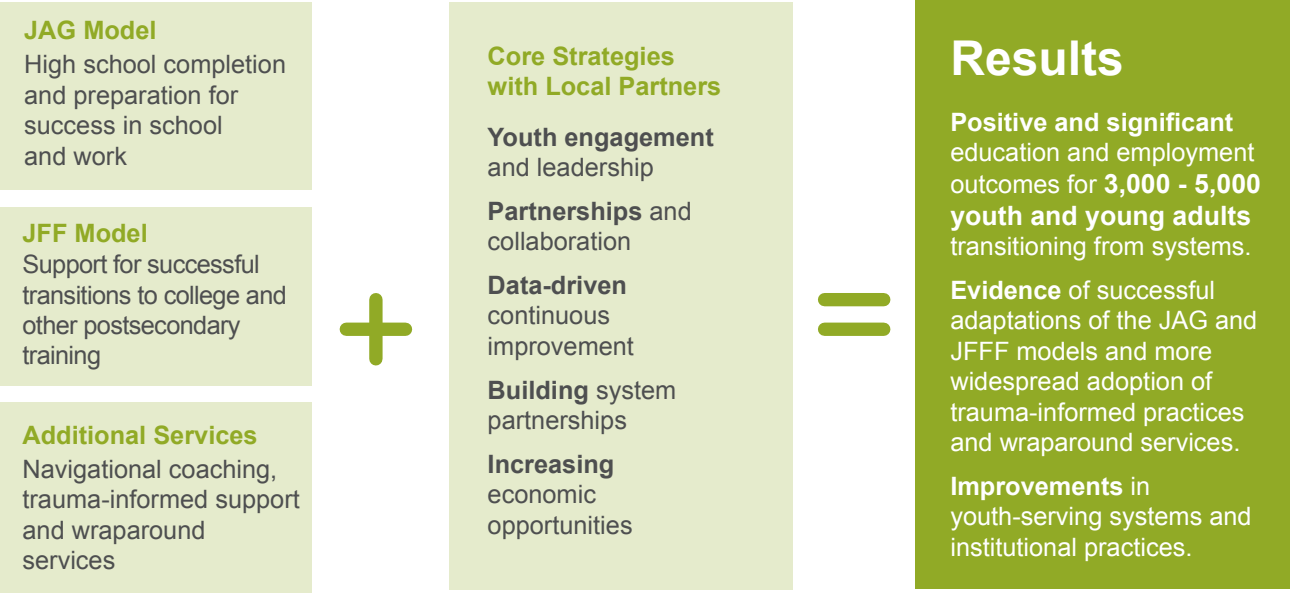
Learn and Earn to Achieve Potential (LEAP) is a multimillion-dollar initiative that is increasing employment and educational opportunities for young people who have been involved in the child welfare and justice systems, or who are homeless, by adapting and scaling two evidence-based models to address their specific needs and challenges. Launched by the Corporation for National and Community Service's Social Innovation Fund and the Annie E. Casey Foundation in 2015, this effort involves 10 local partnerships working across eight states, four national organizations — Jobs for America's Graduates (JAG), Jobs for the Future (JFF), MDRC and School & Main Institute — and a growing network of nearly 50 local and national funders. Here's a glimpse at the early results from LEAP's first year.

THE CHALLENGE

4.9 million young people ages 16–24 are neither in school nor working



## THEORY OF CHANGE

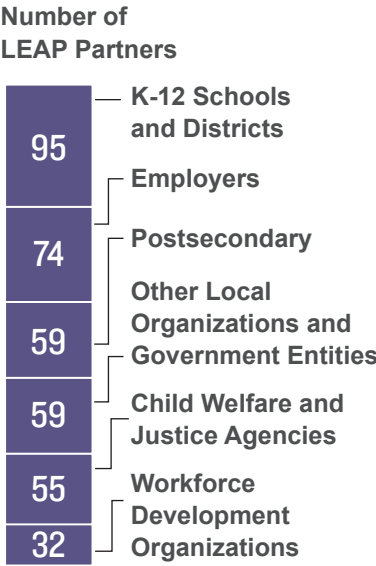


## OUR REACH



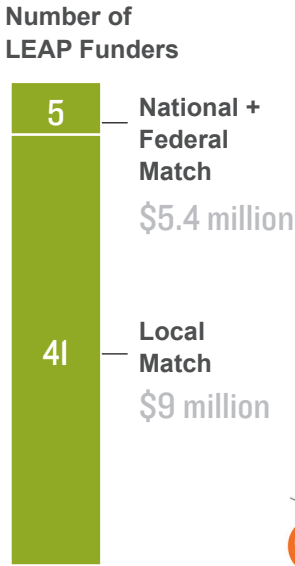
## CROSS-SECTOR PARTNERSHIPS

(374 TOTAL PARTNERS)



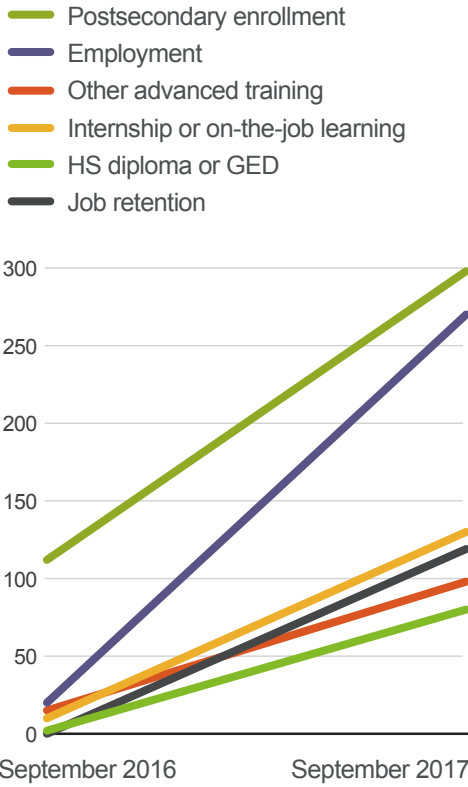
## FUNDING BREAKDOWN

(FIRST THREE YEARS)



## EARLY MILESTONES

Number of Participants Achieving Early Employment and Educational Milestones, Sept. 2016–Sept. 2017



## LEAP AT A GLANCE

WHO:

The Casey Foundation, Jobs for America's Graduates, Jobs for the Future, MDRC, School & Main Institute and 10 local partnerships in eight states.

WHAT:

An initiative launched in partnership with the Social Innovation Fund to connect young people with postsecondary education and employment.

FOCUS:

Young people ages 15-25 in the child welfare or juvenile justice system, or who are homeless.

WHY:

Improve educational and economic opportunities and systems for youth and young adults.

## EARLY SYSTEM CHANGES

Created **cross-system partnerships** that expanded LEAP participants' access to resources such as housing, transportation and other integrated services prior to transition.

Established a **cross-agency teaming approach** to support older youth and young adults.

**Trained partners in trauma-informed care** to ensure youth encounter caring adults in a variety of settings.

**Developed early warning systems** with postsecondary admissions and financial aid staff to proactively address student barriers.

**Built alumni networks** to serve as mentors for future LEAP participants.

For more information, contact [leap@aecf.org](mailto:leap@aecf.org).