



EVALUATING TWO-GENERATION APPROACHES

Integrating Partnerships and Embedding Equity

Welcome and Overview



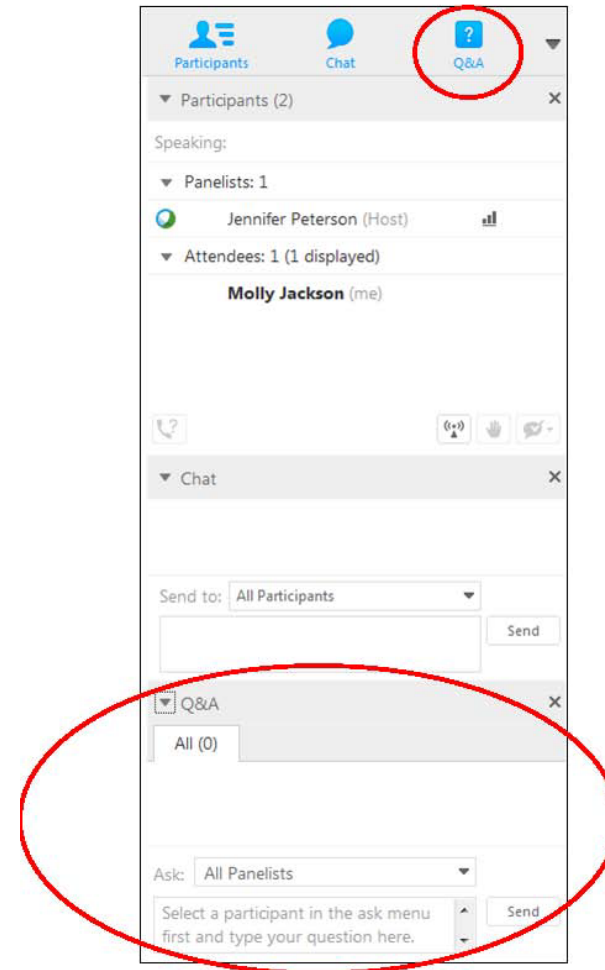
Kantahyanee Murray
Senior Research Associate
The Annie E. Casey Foundation

Agenda

- Communicating during the webinar
- Two-generation approaches: serving parents and children together
- About the evaluations: Family-Centered Community Change and Agape
- Discussion and common themes: Embedding equity
- Discussion and common themes: Integrating partnerships and data
- Your questions
- Resources for learning more

Communicating During the Webinar

- Communicate with us using the Chat or Q&A window in the lower right corner of your screen.
- Type questions for the panel at **any time** during the webinar; no need to wait for the end!



Our Panel



Tanja Jones
Community Properties of Ohio



Susan J. Popkin
The Urban Institute



Marla McDaniel
The Urban Institute



Paulita Edmondson
Agape Child & Family Services



Tosin Shenbanjo
Mathematica



Kimberlin Butler
Mathematica

Casey and Evaluating Two-Generation Approaches



Allison Holmes
Senior Research Associate
The Annie E. Casey Foundation

Poll Question: Who is in the Room?

Which category best describes you?

- Funder
- Community member
- Researcher
- Practitioner



The Annie E. Casey Foundation develops solutions to build a brighter future for children, families and communities.

What are Two-Generation Approaches?

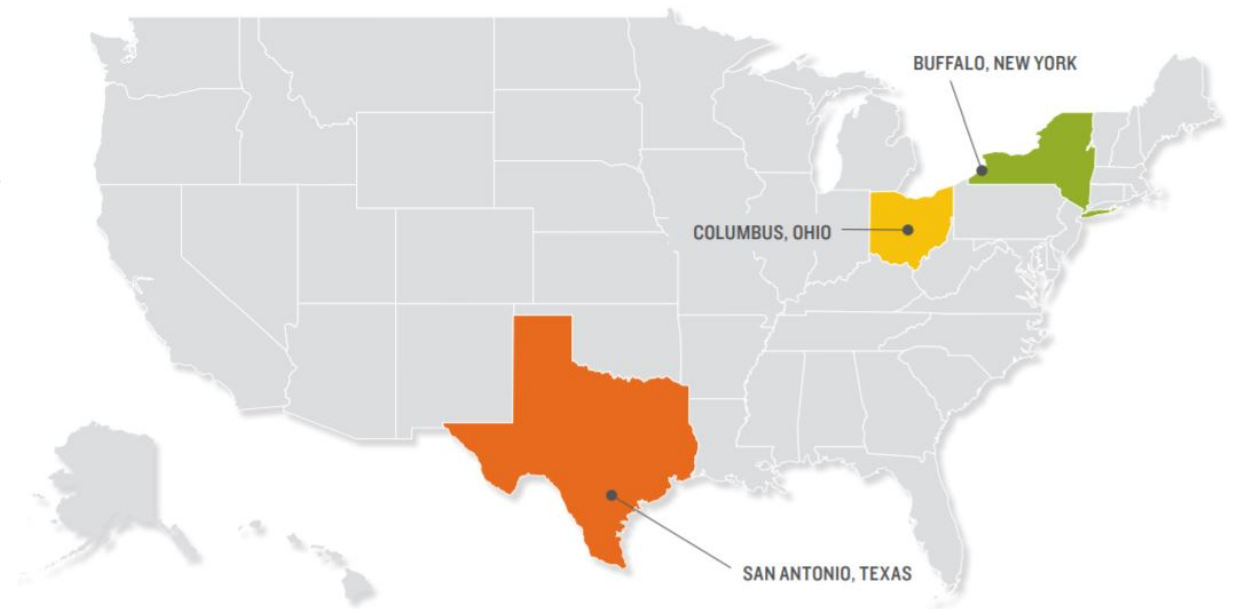


- Aim to address the needs of parents and their children simultaneously
- Designed to help families achieve financial stability and children to develop well
 - Job training
 - Financial coaching
 - Early childhood education
- Integration of programs, staff and data
- Increasing focus on equity

Family-Centered Community Change (FCCC)

The Foundation joined three partnerships, providing technical assistance, trainings and peer learning opportunities to strengthen two-generation approaches in:

- Buffalo, New York
- Columbus, Ohio
- San Antonio, Texas



Evaluating FCCC



Urban Institute Evaluation (2013-2019)

Initiative co-engagement in evaluation design

Longitudinal in-depth implementation study/process study

Descriptive cost study



Data sources

Interviews and focus groups with program staff, administrators and participants

Program data on participant and family characteristics and program activities

Costs of staff time spent on FCCC-related activities

About Agape

Agape Child & Family Services is a faith-based organization dedicated to serving individual adults and families living in poverty and to improving communities in the Memphis, Tennessee area.

- Two-generation model called “2Gen” launched in 2016
 - Delivers community-specific programs and services at schools, apartment communities, and churches
 - No-wrong-door policy and a voice-and-choice framework
 - Diverse partners and staff with lived experience similar to that of participants



Evaluating Agape's 2Gen Program

- **Study type:** Mixed-method evaluation
- **Goals:** Document 2Gen's services and key components, participant characteristics and experiences, perceived benefits of program participation and perceived best practices and opportunity areas
- **Data sources:** Enrollment and participation data, interviews with Agape leadership and staff and focus groups with adult program participants

Embedding Equity

Common Evaluation Themes: Equity



- Centering families by including their voice in program design and decision making is an important equity strategy
- Centering families was thought to increase family participation
- Centering families was challenging to put into practice
- Embedding equity strategies can be a tool for tackling structural and contextual community challenges
- Engaging families in program design and decision making and giving attention to structural and contextual community challenges are complementary practices

Lessons Learned



Invest sufficient time



Create shared definitions and language



Invest in ongoing trainings and learning opportunities



Know your audience and how to frame their roles



Collect and use data to track progress and improvements



Start with the lead organization as a model for others

Question 1

What is an **important consideration** for other initiatives that aspire to include families in design and other decision-making roles?

Question 2

What are barriers and opportunities to **model behavior** that furthers equity?

Question 3

What should a program or initiative focus on
in the early stages to embed equity in their work?

Integrating Partnerships and Data

Common Evaluation Themes: Integration

- Intentional integration across programs, services, and partners creates **a more seamless and whole-family experience**.
- Integration requires **communication strategies** (such as recurring meetings, internal policies) among staff and can be facilitated by locating offices together.
- **Sharing program data** among staff and partners can also serve as a communication strategy in addition to tracking program implementation and family progress.



Lessons Learned



Aligning culture and practice to shared goals is necessary and moves at the speed of trust.



A “no wrong door” helps bring families in and requires a balance for staff and data communication.



Greater understanding among staff about the approach means greater connection among services.



Improving data systems and data alignment requires staff training and support.

Question 1

What **feedback mechanisms** work best between frontline staff and leadership, within and between programs?

Question 2

How did **partnerships with local and state entities**
structure data to support these place-based
approaches?

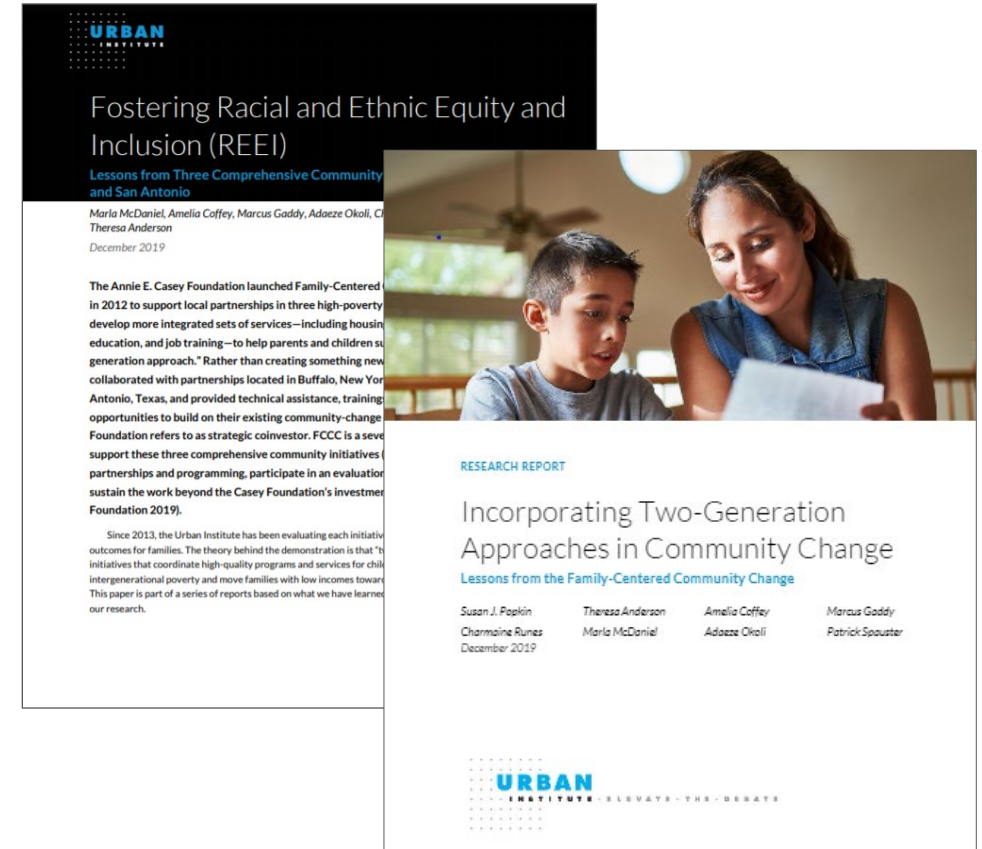
Question 3

What **data practice or refinement** has been most helpful for staff and families? What has been most helpful for implementation and for evaluation/performance assessment?

Your Questions

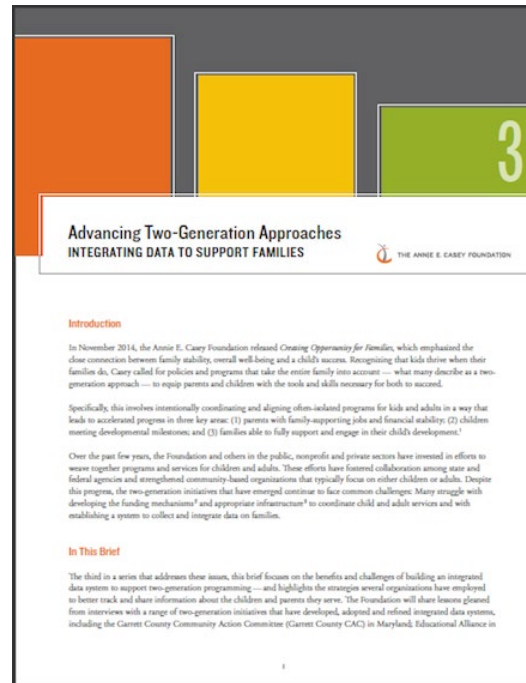
Read More About the Evaluations

- Read the Urban Institute FCCC context and equity reports at <https://www.aecf.org/blog/external-forces-affect-efforts-to-serve-parents-and-children-together/> or [on the Urban Institute's website](#).
- Stay tuned for release soon of Urban's partnership integration brief and full evaluation report.
- Learn more about the Agape evaluation at <https://www.mathematica.org/events/evaluating-two-generation-approaches-integrating-partnerships-and-embedding-equity>.



Resources for Learning More

- Click on the images for **more resources** on Family-Centered Community Change and insights into two-generation approaches, available at aecf.org.





THE ANNIE E. CASEY FOUNDATION

*Developing solutions to build a brighter future
for children, families and communities*

www.aecf.org